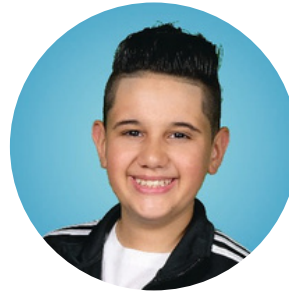




Even Better BENEFITS

Exclusively for the School District of
Osceola County



Think of this as a multiple choice test—just like the ones you used to take in class—except you get to choose the right answer. It's the coverage option that fits you and your family best.

LESSON ONE:

AN OVERVIEW OF YOUR MEDICAL RATES

So you can understand how the different benefits will impact your budget, we've also included a summary of the per month rates for our key benefits here.

MEDICAL:

	Healthy Essentials	Healthy Advantage Plus	Healthy Center Plan
Retiree Only	\$588.17	\$684.56	\$473.78
Retiree + Spouse	\$1,235.15	\$1437.68	\$994.96
Retiree + Child(ren)	\$906.57	\$1061.06	\$734.36
Retiree + Family	\$1,588.06	\$1848.45	\$1279.22

LESSON TWO:

AN OVERVIEW OF YOUR DENTAL & VISION RATES

DENTAL:

	DHMO	PPO	
		Low Option	High Option
	Rate per month	Rate per month	Rate per month
Retiree	\$13.74	\$21.24	\$34.81
Retiree + One	\$24.06	\$43.58	\$71.35
Retiree + Family	\$37.79	\$76.24	\$124.80



**New Dental Rates Premium
with an average of 9.9%
increase with Enhanced Dental
Benefits on select PPO plans**

VISION:

	Standard	Enhanced
Retiree	\$4.89	\$10.94
Retiree + Family	\$13.50	\$30.19